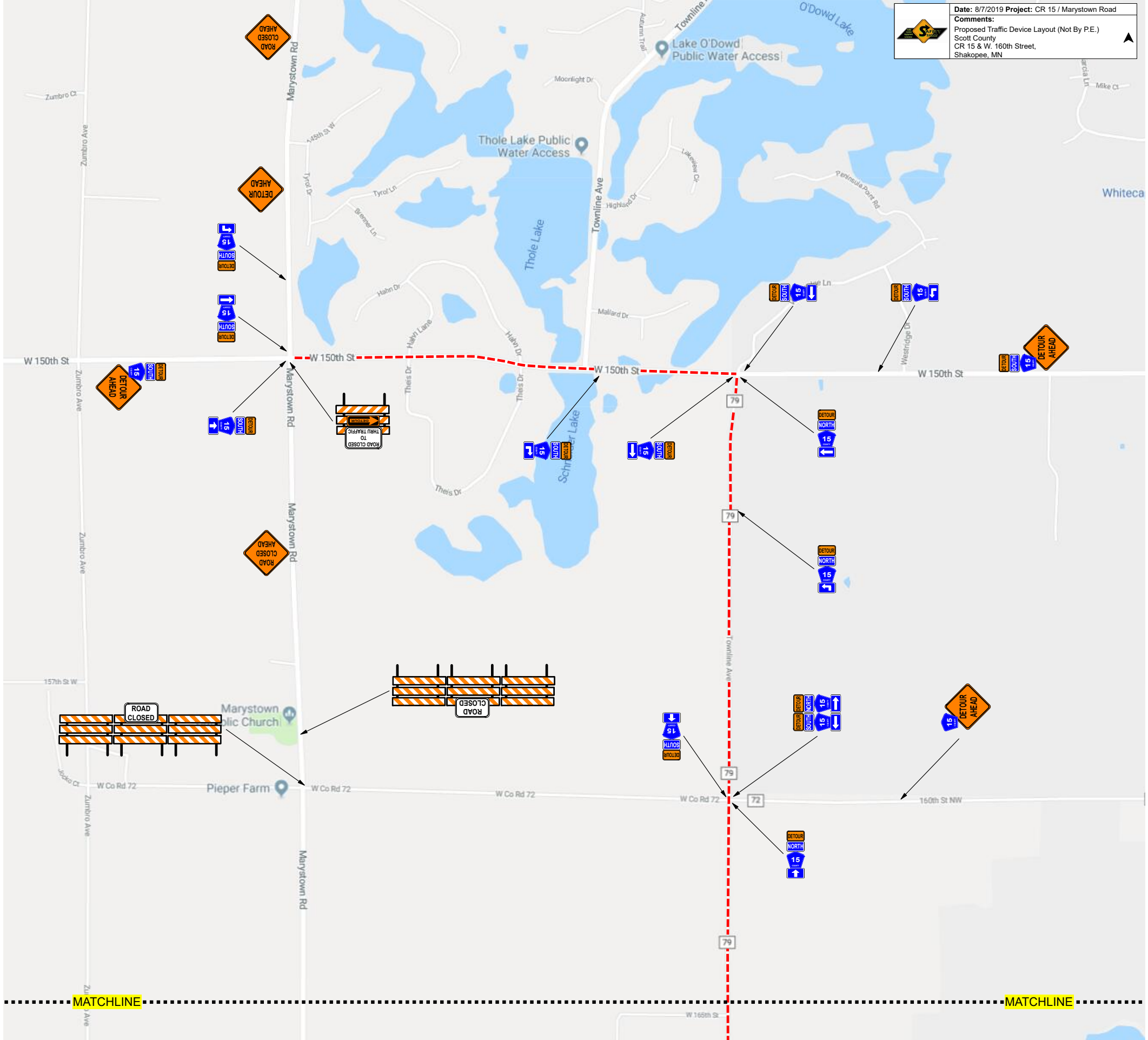
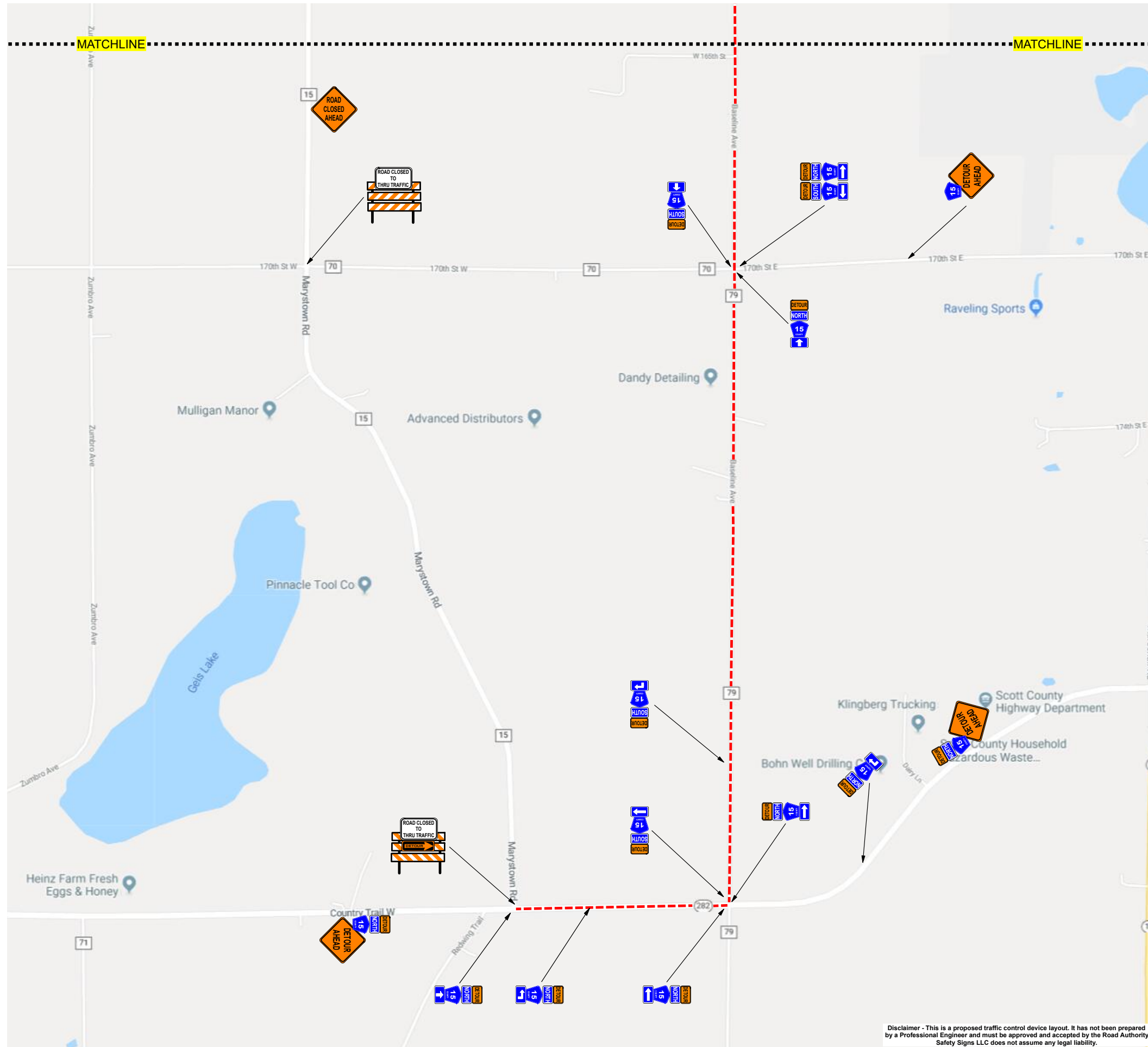


Date: 8/7/2019 **Project:** CR 15 / Marystown Road
Comments:
Proposed Traffic Device Layout (Not By P.E.)
Scott County
CR 15 & W. 160th Street,
Shakopee, MN





Disclaimer - This is a proposed traffic control device layout. It has not been prepared by a Professional Engineer and must be approved and accepted by the Road Authority. Safety Signs LLC does not assume any legal liability.