

## Contact Information

If you have questions about this project during construction or would like more information about the project you are encouraged to contact:

Jake Balk  
Construction Manager  
(952) 496-8436  
[jbalk@co.scott.mn.us](mailto:jbalk@co.scott.mn.us)

Tony Winiacki, PE  
County Engineer  
(952) 496-8008  
[twiniacki@co.scott.mn.us](mailto:twiniacki@co.scott.mn.us)

Scott County  
Transportation Services  
600 Country Trail East  
Jordan, MN 55352  
(952) 496-8346

## Visit Our Website

Information regarding this project is available at:  
<https://www.scottcountymn.gov/1850>

Information on all County Highway projects can be found on the Scott County website at [www.co.scott.mn.us](http://www.co.scott.mn.us) by selecting “**Current & Future Projects**” under the “**Roads & Transportation**” Section.



Scott County Physical Development  
600 Country Trail East  
Jordan, MN 55352

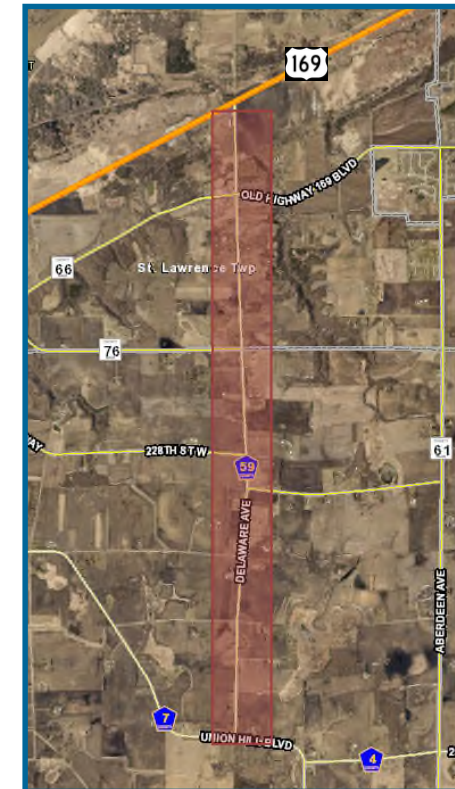
CH 59 Pavement Project  
Construction Notice



## County Highway 59 Pavement Project

September 2019

## Construction Update



Construction for this project will begin on September 23rd and is expected to be completed by November.

A construction phasing map is provided inside with more details.

## What's Inside?

- Project Background
- Construction Timeline
- Construction Phasing

## Project Background

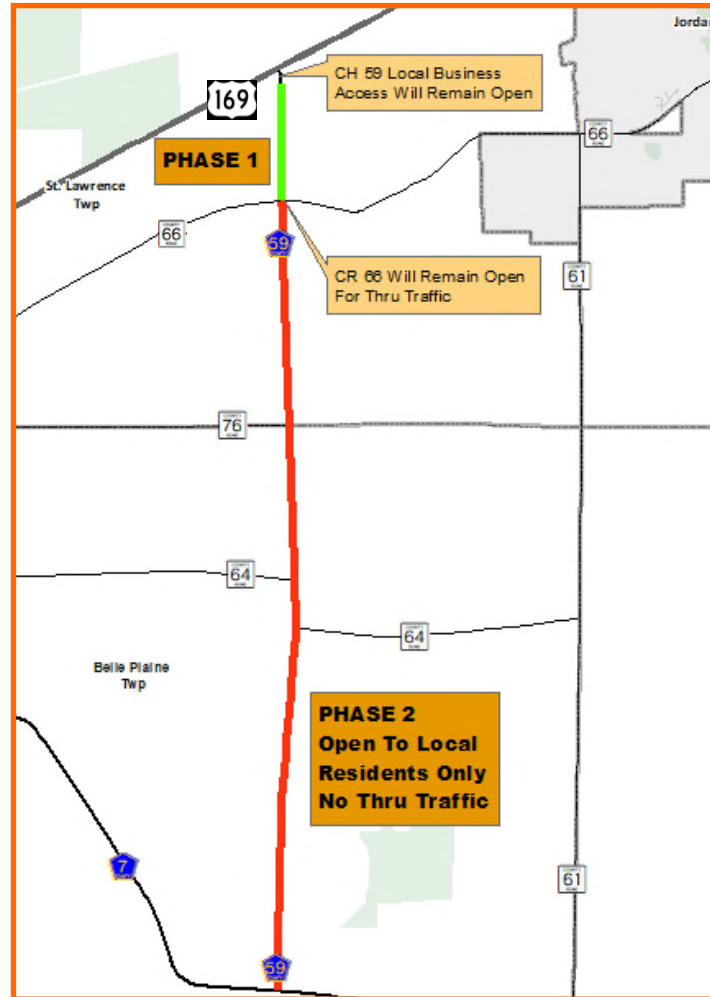
In 2020 MnDOT will reconstruct two bridges on Trunk Highway 21 in Jordan. With these bridges under construction, traffic will need to be detoured onto CH 59. After evaluation of the existing pavement conditions we decided that the CH 59 Pavement Project needs to be completed in 2019, so that the county pavement investment is protected during the detour.

The County Highway 59 Pavement Project was originally scheduled for the 2020 construction year, but has been moved up to 2019 based on MnDOT's planned 2020 detour.

The project will reconstruct CH 59 between CH 7 and US 169 in Belle Plaine Township and St. Lawrence Township in two phases.

**ROAD CLOSED  
TO  
THRU TRAFFIC**

## Construction Phasing



Visit the Project website for more information, including:

- Construction Updates
- Current Project Timeline
- Additional Project Background Information

Project Website:

<https://www.scottcountymn.gov/1850>

## Construction: September to November 2019

### **PHASE 1: CH 59 from CH 66 to US 169**

CH 59 from CH 66 to US 169 will be a cold in place recycle treatment on the top 7 inches of pavement.

CH 66 north to US 169 will be the first phase of the work. This work is expected to begin on September 23 - weather permitting. This phase is anticipated to take two weeks. The road will be closed to through traffic but local access will be permitted.

***\*Access at US 169 will remain open to local businesses.***

***\*CH 59 from CH 66 to US 169 will be open on the weekends.***

### **PHASE 2: CH 59 from CH 7 to CH 66**

This phase will have all bituminous removed and cement treatment of the existing aggregate base. New pavement will be installed on this section.

The second phase of work from CH 7 to CH 66 is anticipated to begin the week of Monday, October 7th and will take 4 weeks to complete. The road will also be closed to through traffic but local access will be permitted.

***\*Local access only will be permitted.***