

Contact Information

Scott County and its partners are committed to working with interested individuals throughout this project. If you would like to provide input but cannot attend the Open House, or if you have questions about this project, you are encouraged to contact:

Mark Callahan, PE

Project Manager - Scott County
(952) 496-8367
macallahan@co.scott.mn.us

DJ Sosa, PE

Project Manager - WSB Consultants
(763) 762-2817
dsosa@wsbeng.com

Scott County Highway Department

Government Center
200 Fourth Avenue West
Shakopee, MN 55379

Information on the Web

Information regarding this project is available at:
www.scottcountymn.gov/1913/TH-169TH-282CR-9-Interchange-Preliminary

Information on all county highway projects can be found at the Scott County website at:
www.scottcountymn.gov/504/Roads-Transportation



Sign-up to receive project updates by E-Mail:
www.scottcountymn.gov/list.aspx



Scott County Government Center
200 4th Ave W
Shakopee, MN 55379

Open House Invitation Highways 169/282/CH 9 Interchange

Este folleto está disponible en español a petición.

Hwy 169 / 282 / CH 9 Interchange

SEPTEMBER 2022

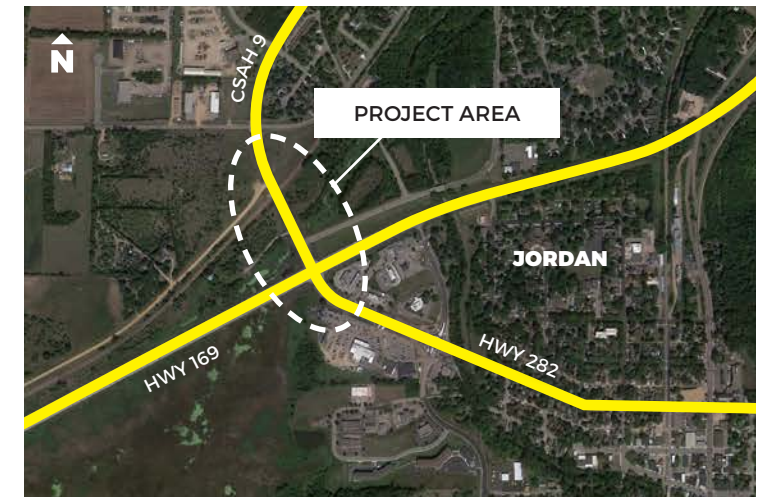


mn DEPARTMENT OF
TRANSPORTATION

OPEN HOUSE INVITATION

Tuesday, September 27th
5:00 – 6:30 PM

Jordan Library
275 Creek Ln S
Jordan, MN 55352



What's Inside?

- Project Background/Purpose
- Open House Information
- Project Schedule

Background Information

Scott County, with the City of Jordan and MnDOT, have been planning for several roadway infrastructure improvements on and along Highway 169 and adjacent roadways in the City of Jordan. This includes the construction of an interchange at Hwy 169 / 282 / CH9.

The concept design used to secure funding has gone through value engineering analysis which has led to the development of 3 variations for the potential interchange.

The project team is interested in the community's thoughts, feedback and concerns regarding each interchange variation as the team considers a decision on which variation to bring forward into final design.

Project Purpose/Goals

The purpose of the Hwy 169 / 282 / CH9 Interchange project is to design an interchange which addresses current traffic volumes while considering expandability for future development.

Goals of the project include:

- Improve safety for all users
- Accommodate truck movements
- Improved pedestrian and bicycle connectivity
- Grade separated railroad crossing
- Grade separate Hwy 169 from 282 / CH 9

Open House

At the open house, you will have the opportunity to:

1. Review 3 variations of potential interchange layouts at Hwy 169 / 282 / CH 9.
2. Provide input to Scott County, City of Jordan and MnDOT staff.
3. Learn about the project process and the next steps.

This is an informal open house meeting. No presentation will be given. Your input will help the project team understand what alternative for the interchange and frontage roads should move forward design and construction. County, City and MnDOT staff will be available to discuss issues and listen to your concerns. Maps and more information will be available for review.

**Hwy 169 / 282 / CH 9 Interchange
Open House
Tuesday, September 27th
5:00 – 6:30 PM**

**Jordan Library
275 Creek Ln S
Jordan, MN 55352**



Project Schedule

The interchange project is in the preliminary design and environmental documentation phase, with construction anticipated in 2025-2026.

The schedule below highlights the key milestones as the project progresses over the next few years.

2022	• Environmental Documentation Spring, Summer, Fall, Winter
	• Preliminary Design Spring, Summer, Fall, Winter
2023	• Environmental Documentation Spring
	• Preliminary Design Spring
	• Final Design Spring, Summer, Fall, Winter
2024	• ROW Acquisition Spring, Summer
	• Final Design Spring, Summer
	• ROW Acquisition Spring, Summer
	• Bid & Award Project Fall
2025	• Construction Winter
	• Construction Spring, Summer, Fall, Winter
2026	• Construction Spring, Summer, Fall, Winter

Additional and ongoing citizen engagement will occur throughout the project's development.