

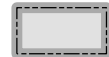


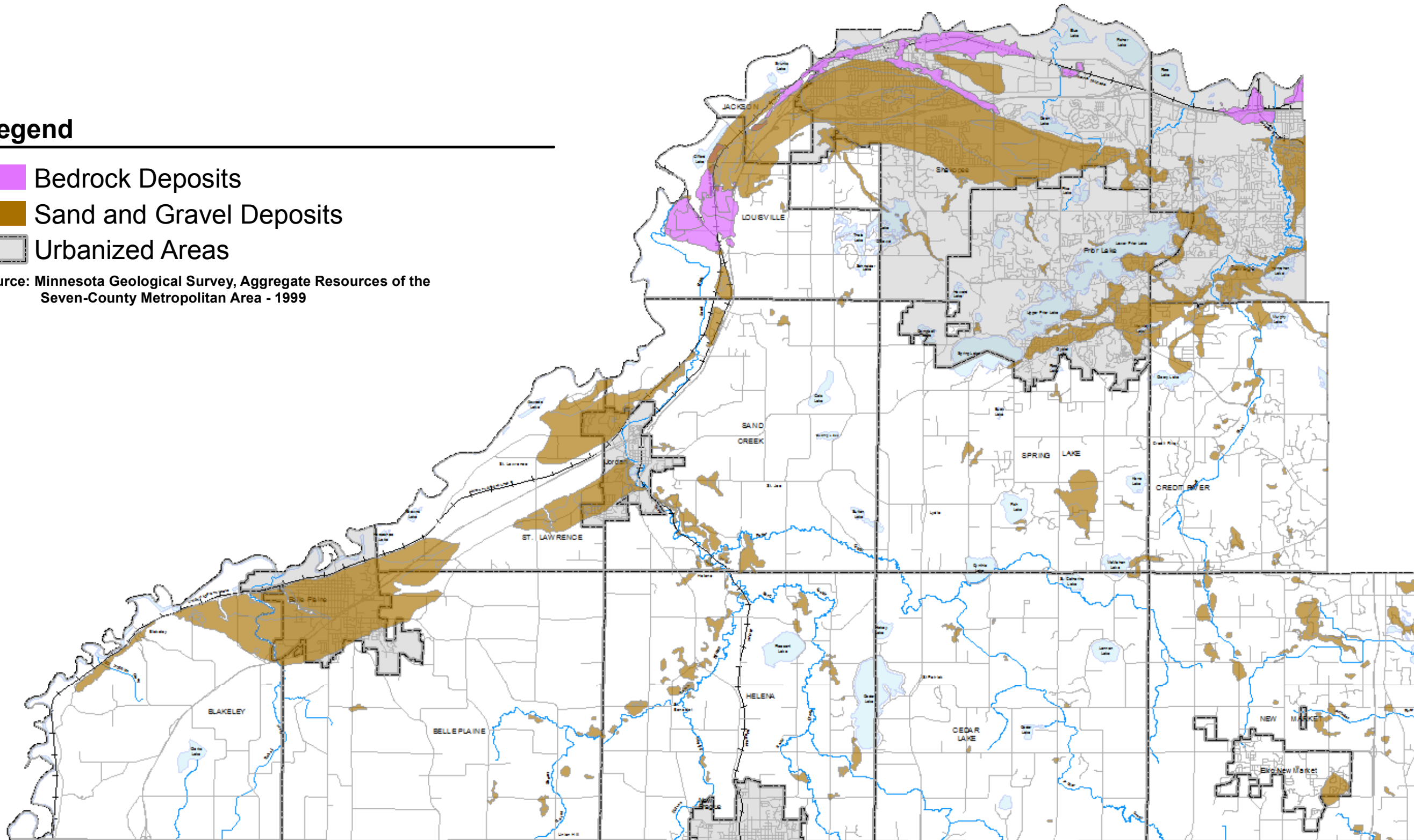
Scott County 2040 Comprehensive Plan Update



Legend

-  Bedrock Deposits
-  Sand and Gravel Deposits
-  Urbanized Areas

Source: Minnesota Geological Survey, Aggregate Resources of the Seven-County Metropolitan Area - 1999



SCOTT COUNTY COMMUNITY DEVELOPMENT DIVISION
Strategic Analysis & Program Support
200 Fourth Avenue West, Shakopee, Minnesota 55379-1220
(952) 496-8475 - Fax (952) 496-8496 - Web: www.scott.mn.us



Aggregate Deposits in Scott County



This map is neither a legally recorded document nor a survey and is intended for planning purposes only. Delineations may not be exact.
Prepared by: Scott County Zoning Administration, 10/21/16